

COMPONENTS

INLET SEPARATOR:

V-110 PROTECTED BY PSV-1101

MAKE: PENFABCO LTD.
CODE: W, RT-1, HT; YEAR BUILT: 2006
MAWP: 285 PSI @ 100 DEG F
MDMT: -20 DEG F @ 285 PSI
CORROSION ALLOWANCE: 0.125"
CRN NO: R2612.213
SERIAL NO: PE10187
(A) 546898

BLOWCASE:

V-120 SEE OPTIONS

INLET GAS FILTER:

V-140 PROTECTED BY PSV-1101

MAKE: JIRO ENERFLEX LTD.
CODE: W, RT-1, HT; YEAR BUILT: 2007
MAWP: 200 PSI @ 100 DEG F
MDMT: -20 DEG F @ 200 PSI
CORROSION ALLOWANCE: 0.125"
CRN NO: T8649.213
SERIAL NO: 076857-01

OIL COALESCING VESSEL:

V-150 PROTECTED BY PSV-1501

MAKE: PENFABCO LTD.
CODE: W, RT-1, HT; YEAR BUILT: 2006
MAWP: 350 PSI @ 250 DEG F
MDMT: -20 DEG F @ 350 PSI
CORROSION ALLOWANCE: 0.125"
CRN NO: R7351.213
SERIAL NO: PE10341
(A) 546840

FUEL GAS SCRUBBER:

V-160 PROTECTED BY PSV-1601

MAKE: ENERFLEX - STETTLER
CODE: W, RT-1; YEAR BUILT: 2006
MAWP: 500 PSI @ 350 DEG F
MDMT: -20 DEG F @ 500 PSI
CORROSION ALLOWANCE: 0.125"
CRN NO: 0H5132.231
SERIAL NO: 4DP-774



ENCANA
UNIT # 90372

COMPONENTS CONTINUED

PSV'S:

PSV-1101 PRESSURE SAFETY VALVE
PROTECTING VESSELS V-110, AND V-140

MAKE: MERCER
TYPE: 8143251V11G11S
SET PRESSURE: 150 PSI
CAPACITY: 1296 SCFM
SIZE: 2" MNPT X 2" FNPT
DATE: 01-06
CRN NO: 0G8841.5C
SERIAL NO: 229594

PSV-1501 PRESSURE SAFETY VALVE
PROTECTING VESSEL V-150, SCREW
S-210, AND COOLER C-510

MAKE: MERCER
TYPE: 9138G11V13U1S
SET PRESSURE: 300 PSI
CAPACITY: 2441 SCFM
SIZE: 2 1/2" 150 ANSI X 1 1/2" 300 ANSI
DATE: 01-06
CRN NO: 0G8841.5C
SERIAL NO: 229782

PSV-1601 PRESSURE SAFETY VALVE
PROTECTING VESSEL V-160

MAKE: MERCER
TYPE: 81-17151V09G11
SET PRESSURE: 100 PSI
CAPACITY: 387 SCFM
SIZE: 1" MNPT X 1" FNPT
DATE: 10-05
CRN NO: 0G8841.5C
SERIAL NO: 209323

COMPONENTS CONTINUED

- SCREW COMPRESSOR:** **S-210**
MAKE: GARDNER DENVER
MODEL NO: SSPG99D
SERIAL NO: S233587
- NATURAL GAS ENGINE:** **M-310**
MAKE: CATERPILLAR
MODEL NO: G3306 ATAAC
ARRANGEMENT NO: 222-9039
SERIAL NO: G6X01435
C/W **EM-3101** EXHAUST MUFFLER
MAKE: SILEX CRITICAL GRADE MUFFLER
MODEL NO: JB-6-SI6-A-B
SERIAL NO: 108675-1-6
- HEATER:** **H-410 / H-420**
MAKE: CATA DYNE
MODEL NO: WX24X24
SERIAL NO: 344546, 344548
- OIL COOLER:** **C-510 A PROTECTED BY PSV-1501**
MAKE: GLOBAL HEAT TRANSFER
MAWP: 350 PSI @ 250 DEG F
CRN NO: 0H4854.213
- GAS COOLER:** **C-510 B PROTECTED BY PSV-1501**
MAKE: GLOBAL HEAT TRANSFER
MAWP: 350 PSI @ 250 DEG F
CRN NO: 0H4854.213
- ENGINE WATER JACKET:** **C-520**
MAKE: GLOBAL HEAT TRANSFER
YEAR BUILT: MAY 06
MODEL NO: JIRO 01
SERIAL NO: 275
- AIR TO AIR COOLER:** **C-530**
MAKE: GHT ALUMINUM (ASTRO CORE)
MODEL NO: MADAC-17
- PUMP:** **P-610**
MAKE: GARDNER DENVER
COMES WITH COMPRESSOR



ENCANA
UNIT # 90372

COMPONENTS CONTINUED

ENGINE OIL DAY TANK:

T-710

MAKE: ENERFLEX STETTLER
SIZE: 20 GALLON
PART NO: OS-36

OIL FILTER:

F-810A/B

MAKE: DONALDSON
MODEL NO: HMK25
WORKING PRESSURE: 350 PSI
DESIGN TEMPERATURE: 250 DEG F
PART NO: P169984
FILTER NO: P165569

CONICAL STRAINER:

F-820

MAKE: ALBERTA STRAINER
MODEL NO: 4" 600#
TYPE: STAINLESS STEEL
150% OPEN AREA; TYPE 40 MESH

FUEL GAS FILTER:

F-830 (PROTECTED BY PSV-1601)

MAKE: SPX AIR TREATMENT
MODEL: 3154826
MAWP: 250 PSI @ 150 DEG F
FLOW: 100 SCFM @ 100 PSI
ELEMENT: 3161232 (0.1 MICRON)
CRN NO: 0E5966.1234567890
SERIAL NO: 1265170



ENCANA
UNIT # 90372

COMPONENTS CONTINUED

CONTROLLERS:

PC-1101 PRESSURE CONTROLLER

MAKE: FISHER
TYPE: 4150KR
RANGE: 0-100 PSI
SERIAL NO: 17625029

**TC-5101 / TC-5201 TEMPERATURE
CONTROLLERS**

MAKE: KIMRAY
TYPE: HT-12

COMPONENTS CONTINUED

CONTROL VALVES:

PCV-1101 PRESSURE CONTROL VALVE

MAKE: FISHER
ACTUATOR TYPE: 1051
ACTUATOR SIZE: 40
BODY TYPE: V-200 SER B
BODY SIZE 3" CL300/600
SERIAL NO: 17721324G

UY-1101 THREE-WAY VALVE

MAKE: AMOT
MODEL NO: 4057D025H2 TYPE: CP
SERIAL NO: I0014

PCV-1102 PRESSURE CONTROL VALVE

MAKE: FISHER
TYPE: 627-552 c/w $\frac{3}{8}$ " orifice
SPRING RANGE: 5-20 PSI

PCV-1601 PRESSURE CONTROL VALVE

MAKE: FISHER
TYPE: 627-488 c/w $\frac{3}{16}$ " orifice
SPRING RANGE: 70-150 PSI

PCV-1602 / PCV-1603 PRESSURE CONTROL VALVES

MAKE: FISHER
TYPE: 67CFR-362TB
SPRING RANGE: 0-35 PSI

TCV-2101 THERMOSTATIC CONTROL VALVE

MAKE: AMOT
MODEL NO: 2BHCT18001
SERIAL NO: M5314
SET @ 180 DEG F

PCV-3101 PRESSURE CONTROL VALVE

MAKE: FISHER
TYPE: 627-496 c/w $\frac{1}{2}$ " orifice
SPRING RANGE: 5-20 PSI

COMPONENTS CONTINUED

CONTROL VALVES CONT: PCV-3102 PRESSURE CONTROL VALVE

MAKE: FISHER
MODEL NO: Y600A1331 c/w 9/16" orifice
RANGE: 4-8 INCHES WATER
CAT PART NO: 2W6022
SERIAL NO: 0017608411

**PCV-3103 / PCV-3104 PRESSURE
CONTROL VALVES**

MAKE: FISHER
TYPE: 627-553 c/w 3/8" orifice
SPRING RANGE: 15-40 PSI

**PCV-4101 / PCV-4201 PRESSURE
CONTROL VALVES**

MAKE: FISHER
MODEL NO: 912N

**TSDV-4101 / TSDV-4201 TEMPERATURE
SHUT DOWN VALVES**

MAKE: CCI THERMAL TECHNOLOGIES
MODEL NO: ASV-375
RANGE SPEC: NGLP ½ PSI

**PCV-4102 / PCV-4202 PRESSURE
CONTROL VALVES**

MAKE: CCI THERMAL TECHNOLOGIES
MODEL NO: RTZ-11-15B
MAX PSI ½ PSI; PO 7.5W.C

**PCV-5101 BACK PRESSURE CONTROL
VALVE**

MAKE: KIMRAY
TYPE: 230SGT-BP-D VITON
DESIGN PRESSURE: 300 PSI @ 300 DEG F
SERIAL NO: 2060600182



ENCANA
UNIT # 90372

COMPONENTS CONTINUED

PANEL ELECTRICAL:

ALTRONIC 6 POINT PYROMETER COMES WITH ALARM

MODEL NO: DPYH-4396U
SERIAL NO: 3843

ALTRONIC ANNUNCIATOR

MODEL NO: DD-40NT-C
SERIAL NO: 3618

ALTRONIC ANNUNCIATOR POWER SUPPLY

PART NO: 690 112
SERIAL NO: 3537

ALTRONIC HOURMETER

PART NO: DH-100A

ALTRONIC CPU-95 IGNITION SYSTEM

PART NO: 791950-8
SERIAL NO: 12460

ALTRONIC CPU-95 DISPLAY MODULE

PART NO: 791902-1
SERIAL NO: 5134

ALTRONIC VOLTAGE REGULATOR

PART NO: 581501



ENCANA
UNIT # 90372

COMPONENTS CONTINUED

ELECTRICAL / INST:

HS-1101 HAND SWITCH

MAKE: TELEMECANIQUE
MODEL NO: XALB174H29H7

LSHH-1101 LEVEL SHUT DOWN HIGH

MAKE: MURPHY
MODEL NO: L1200

PSHH-1101 PRESSURE SWITCH HIGH SUCTION

MAKE: CUSTOM CONTROL SENSORS
MODEL NO: 6900GZE16
SERIAL NO: 260883-0406-7

LSLL-1501 LEVEL SHUT DOWN LOW

MAKE: MURPHY
MODEL NO: L1200

DPSLL-2101 DIFFERENTIAL PRESSURE GAUGE SWITCH LOW

MAKE: CUSTOM CONTROL SENSOR
MODEL NO: 604DJ2
SERIAL NO: 263819-0806-3

PSHH-2101 PRESSURE SWITCH HIGH DISCHARGE

MAKE: CUSTOM CONTROL SENSORS
MODEL NO: 6900GZE18
SERIAL NO: 260883-0306-1

PSLL-2101 PRESSURE SWITCH LOW SUCTION

MAKE: SOR
MODEL NO: 56AG-EF316-M4-C1A-NCCV
SERIAL NO: 060609389

TE-2101 DISCHARGE TEMPERATURE SENSOR

MAKE: WIKA
TYPE: PYROLEAD
SIZE: 4' LEAD WITH 6" STEM

COMPONENTS CONTINUED

ELECTRICAL / INST CON'T:

**TE-2102 COMPRESSOR OIL
TEMPERATURE SENSOR**

MAKE: WIKA
TYPE: PYROLEAD
SIZE: 4' LEAD WITH 6" STEM

FSDV-3101 FUEL SHUT DOWN VALVE

MAKE: MURPHY
MODEL NO: M5081-C

**LISLL-3101 LEVEL INDICATING SWITCH
LOW (ENGINE OIL)**

MAKE: KENCO
MODEL NO: KLCE-12

MPU-3101 SPEED SENSOR (FLYWHEEL)

MAKE: ALTRONIC
PART NO: 691-118-1

**TE-3101 ENGINE JACKET
WATER TEMPERATURE SENSOR**

MAKE: WIKA
TYPE: PYROLEAD
SIZE: 2' LEAD WITH 6" STEM

VSHH-3101 VIBRATION SWITCH HIGH

MAKE: MURPHY
TYPE: VS2-E

**TE-3102 ENGINE OIL
TEMPERATURE SENSOR**

MAKE: WIKA
TYPE: PYROLEAD
SIZE: 2' LEAD WITH 8" STEM

MPU-3102 SPEED SENSOR (RESET)

MAKE: ALTRONIC
PART NO: 691-118-1

MPU-3103 SPEED SENSOR (PANEL)

MAKE: ALTRONIC
PART NO: 591-014-1



ENCANA
UNIT # 90372

COMPONENTS CONTINUED

ELECTRICAL / INST CONT:

**TE-3103 EXHAUST
TEMPERATURE SENSOR**

MAKE: WIKA

TYPE: PYROLEAD

SIZE: 4' LEAD WITH 6" STEM

**LISLL-5201 LEVEL INDICATING SWITCH
LOW (ENGINE COOLANT)**

MAKE: MURPHY

TYPE: EL150K1-E



ENCANA
UNIT # 90372

COMPONENTS CONTINUED

PANEL GAUGES:

PI-1102 SUCTION PRESSURE INDICATOR

MAKE: WIKA SS LF
SCALE: -30"HG – 100 PSI / -100 – 700KPA
SIZE: 1/4" LBM X 4" FACE

DPISHH-1501 COALESCER FILTER DIFFERENTIAL PRESSURE INDICATING SWITCH HIGH

MAKE: MIDWEST
MODEL: 120AA-00-0(CA)
RANGE: 0-30 PSID
SERIAL NO: 12050381

DPISHH-2101 COMPRESSOR OIL FILTER DIFFERENTIAL PRESSURE SWITCH HIGH

MAKE: MIDWEST
MODEL: 120AA-00-0(CA)
RANGE: 0-30 PSID
SERIAL NO: 12050396

PI-2101 DISCHARGE PRESSURE INDICATOR

MAKE: WIKA SS LF
SCALE: 0-400 PSI / 0-2800 KPA
SIZE: 1/4" LBM X 4" FACE

PISLL-3103 PRESSURE INDICATING SWITCH LOW (ENGINE OIL)

MAKE: MURPHY SWICHGAGE ®
MODEL NO: A25PEF-150
SCALE: 0-150 PSI / 0-1000 KPA
PART NO: 05705740 8-5

COMPONENTS CONTINUED

PRESSURE GAUGES:

PI-1101 PRESSURE INDICATOR

MAKE: WIKA SS LF
SCALE: 0-400 PSI / 0-2800 KPA
SIZE: 1/2" LM X 4" FACE

DPI-1401 DIFFERENTIAL PRESSURE INDICATOR (INLET FILTER)

MAKE: MID WEST
MODEL NO: 120AA-00-00
RANGE: 0-50 PSI / 0-350 KPA
SERIAL NO: 1206430

PI-1601 PRESSURE INDICATOR

MAKE: USG SS LF
SCALE: 0-200 PSI / 0-1400 KPA
SIZE: 1/4" LM X 2 1/2" FACE

PI-1602 / PI-1603 PRESSURE INDICATORS

MAKE: WIKA SS LF
SCALE: 0-60 PSI / 0-420 KPA
SIZE: 1/4" LM X 2 1/2" FACE

PI-3101 PRESSURE INDICATORS

MAKE: WIKA SS LF
SCALE: 0-60 PSI / 0-420 KPA
SIZE: 1/4" LM X 2 1/2" FACE

PI-3102 PRESSURE INDICATOR

MAKE: WIKA LF
SCALE: -30" HG-30 PSI / -100-210 KPA
SIZE: 1/4" CBM X 2 1/2" FACE

PI-5101 PRESSURE INDICATOR

MAKE: WIKA SS LF
SCALE: 0-300 PSI / 0-2100 KPA
SIZE: 1/4" LM X 2 1/2" FACE

COMPONENTS CONTINUED

MISC:

LG-1101 LEVEL GAUGE

MAKE: JERGUSON
MODEL NO: 68-17R2040AN
CRN: 0F4355.5162

LG-1501 LEVEL GAUGE

MAKE: JERGUSON
MODEL NO: 68-17R2040AN
CRN: 0F4355.5162
C/W GAUGE VALVES
MAKE: JERGUSON
MODEL NO: 68-146GS
CRN NO: 0F4355.5162

FG-1501 / FG-1502 FLOW GAUGES

MAKE: AC & R
MODEL NO: SG-04

HV-2101 HYDRAULIC VALVE

MAKE: CROSS
MODEL: BA12AD5AEO

MC-2101 COUPLING (BELL HOUSE MOUNT)

MAKE: ARCUSAFLEX
MODEL NO: AC4NNF3030

TI-2101 TEMPERATURE INDICATOR

MAKE: TREND
SCALE: -40 TO 160 °F / -40 TO 70 °C
SIZE: 1/2" CBM X 3" FACE

A-3101 ALTERNATOR

MAKE: ALTRONIC
PART NO: 590110-G

CE-3101 CRANKCASE EVACUATION VENTURI

MAKE: PENBERTHY LL 3/4
MODEL NO: JP01C12TE
PART NO: 56840-010



ENCANA
UNIT # 90372

COMPONENTS CONTINUED

MISC CONTINUED:

S-3101 STARTER

MAKE: TDI
MODEL NO: T30I
PART NO: T312-60017-02R
SERIAL NO: 05060920

TI-5101 TEMPERATURE INDICATOR

MAKE: TREND
SCALE: -40 TO 160 °F / -40 TO 70 °C
SIZE: 1/2" CBM X 3" FACE

LI-5202 COOLANT SURGE TANK

MAKE: CNH
PART NO: 435543A1
CAP / PLUG: 440729AI

LG-7101 LEVEL GAUGE

MAKE: JERGUSON
MODEL NO: 68-1252502A
CRN NO: 0F4355.5162



ENCANA
UNIT # 90372

COMPONENTS CONTINUED

OPTIONS: BLOWCASE:

V-120 PROTECTED BY PSV 1201

MAKE: ENERFLEX STETTLER
CODE: RT-1, W, HT; YEAR BUILT: 2006
MAWP: 669 PSI @ 230 DEG F
MDMT: -20 DEG F @ 669 PSI
CORROSION ALLOWANCE: 0.125"
CRN NO: T4573.231
SERIAL NO: 066356
(A) 550506
NO. OF PRESSURE CYCLES 1 000 000
PRESSURE DIFFERENTIAL CYCLE: 0-300
PSI

LC-1201 LEVEL CONTROLLER

MAKE: MURPHY N U MATIC®
MODEL NO: L1200N
PART NO: 15700072 B-10

LG-1201 LEVEL GAUGE

MAKE: JERGUSON
MODEL NO: 68-17R2040AN
CRN NO: 0F4355.5162

PSV-1201 PRESSURE SAFETY VALVE PROTECTING VESSELS V-120

MAKE: MERCER
TYPE: 81-17151V11G11S
SET PRESSURE: 300 PSI
CAPACITY: 1069 SCFM
SIZE: 1" MNPT X 1" FNPT
DATE: 02-07
CRN NO: 0G8841.5C
SERIAL NO: 276997

UY-1201 PRESSURE SWITCH

MAKE: AMOT
MODEL NO: 4057D031H2
TYPE: CG
SERIAL NO: JF795

LC-1202 LEVEL CONTROLLER

MAKE: MURPHY N U MATIC®
MODEL NO: L1200NDVO
PART NO: 15-70-0078 B-9

COMPONENTS CONTINUED

OPTIONS CON'T:

BLOWCASE CONTINUED:

LCV-1203 LEVEL CONTROL VALVE

MAKE: NORRISEAL CONTROLS
SERIES: 2275 FO C/W 1/2" PORT
MODEL NO: SN40DTV-9BA2
SERIAL NO: 11946

PV-1201 RESTRICTOR VALVE

MAKE: SMC
MODEL NO: NAS4000

LCV-1204 LEVEL CONTROL VALVE

MAKE: NORRISEAL CONTROLS
SERIES: 2275 FC C/W 1/2" PORT
MODEL NO: SN40RTV-9BA4
SERIAL NO: 12736

PV-1202 RESTRICTOR VALVE

MAKE: SMC
MODEL NO: NAS4000

FLOW METER:

FE-1601

MAKE: ROOTS METER
MODEL NO: 8C-175
B/M: 051389-122
METER FACTOR: 1.000
SERIAL NO: 0650352

GAS DETECTION:

AIT-1101

MAKE: NET SAFETY
MODEL NO: MLP-LP-A-SC1100
POWER: 10.5-32 VDC 2.0 WATT
OUTPUT: 4-20 MA
CLASS 1, DIV 1, GROUPS B/C/D, TYPE 4X T5
SERIAL NO: M159331N

HEAD:

MODEL: SC1100
SERIAL NO: 81702IN

TRANSMITTER:

MODEL NO: JB-LEL-A
SERIAL NO: M159331N



ENCANA
UNIT # 90372

COMPONENTS CONTINUED

OPTIONS CON'T: FIRE DETECTION:

FD-1102

MAKE: CUSTOM CONTROL SENSORS
TYPE: 6900GE12
RANGE: 0-20 PSI
SERIAL NO: 265440-1206-3
SET: 15 PSI FALLING
c/w ZONE SENSORS AS FOLLOWS:
TSE-1102 / TSE-1103 GREEN SWAGELOK
SS-6-FTA-255 (255 °F)
TSE-1104 RED SWAGELOK SS-6-FTA-281
(281 °F)

UY-1102 THREE-WAY VALVE (FIRE DET.)

MAKE: AMOT
MODEL NO: 4057D025H2 TYPE: CP
SERIAL NO: H0014

RO-1102 RESTRICTOR

MAKE: AMOT
PART NO: 2185L-011
ORIFICE: O.014

GENERATOR:

G-3101

MAKE: ELECTRODYNE
PART NO: 102499-HZ24
RATING: 24V 60 AMP
SERIAL NO: 06J070A

BATTERIES

MAKE: BATTERY ELECTRIC
PART NO: BACTRIC G27
INVOICE NO: 16463

AUX FUEL GAS SCRUBBER:

V-190 PROTECTED BY PSV 1901

MAKE: IMPACT INDUSTRIAL SALES & SERVICES
CODE: W, RT-2, YEAR BUILT: 2006
MAWP: 350 PSI @ 250 DEG F
MDMT: -20 DEG F @ 350 PSI
CORROSION ALLOWANCE: 0.125"
CRN NO: OH7651.2
SERIAL NO: F26002



ENCANA
UNIT # 90372

COMPONENTS CONTINUED

OPTIONS CON'T:

AUX FUEL GAS SCRUBBER CON'T: **LC-1901 LEVEL CONTROLLER**

MAKE: MURPHY N U MATIC®
MODEL NO: L1200NDVO
PART NO: 15-70-0078 C-1

LCV-1901 LEVEL CONTROL VAVLE

MAKE: FISHER
MODEL NO: D2 FLO PRO FC ½" PORT
LOT/DATE NO: MO-D2-0154-4406

LG-1901 LEVEL GAUGE

MAKE: JERGUSON
MODEL NO: 68-1252502A
CRN NO: 0F4355.5162

LSHH-1901 LEVEL SHUT DOWN HIGH

MAKE: MURPHY
MODEL NO: L1100

PCV-1901 PRESSURE CONTROL VALVE

MAKE: FISHER
TYPE: 627-488 c/w 3/16" orifice
SPRING RANGE: 70-150 PSI

PI-1901 PRESSURE INDICATOR

MAKE: USG SSLF
SCALE: 0-200 PSI / 0-1400 KPA
SIZE: ¼" BTM X 2 ½" FACE

PSV-1901 PRESSURE SAFETY VALVE PROTECTING VESSEL V-190

MAKE: MERCER
TYPE: 8117151V09G11S
SET PRESSURE: 150 PSI
CAPACITY: 557 SCFM
SIZE: 1"MNPT X 1" FNPT
DATE: 08-06
CRN NO: 0G8841.5C
SERIAL NO: 276998



ENCANA
UNIT # 90372

COMPONENTS CONTINUED

OPTIONS CON'T:

PSV-1902 PRESSURE SAFETY VALVE

MAKE: MERCER
TYPE: 81-17151V11G11S
SET PRESSURE: 300 PSI
CAPACITY: 1069 SCFM
SIZE: 1"MNPT X 1" FNPT
DATE: 01-07
CRN NO: 0G8841.5C
SERIAL NO: 308973

PI-3103 PRESSURE INDICATOR

MAKE: WIKA SSLF
SCALE: 0-100 PSI / 0-750 KPA
SIZE: 1/4" LM X 2 1/2" FACE

LCV-1601 / LCV-1602 AUTO DUMP VALVE

MAKE: WATSON McDANIEL LIQUID DRAINER
SERIES: WLD 1800
PMA: 600 PSI
TMA: 500 DEG F

FIRE EXTINGUISHER:

MAKE: ULC FLAG FIRE EXTINGUISHER
MODEL: PC 20-ABC+1
MODEL: YL-906117



**ENCANA
UNIT # 90372**

COMPONENTS CONTINUED

FLEX JOINTS:

4" 300 ANSI SENIOR FLEXONICS FLEX JOINT
MAWP: 515 PSIG @ 70 DEG F
PART NO: C06727A
CRN: 0D2524.5234670189

3" 300 ANSI SENIOR FLEXONICS FLEX JOINT
MAWP: 580 PSIG @ 70 DEG F
PART NO: W/O 36445
CRN: 0D2524.5234670189

2" 300 ANSI SENIOR FLEXONICS FLEX JOINT
MAWP: 740 PSIG @ 70 DEG F
PART NO: W/O C06054A
CRN: 0D2524.5234670189

VALVES:

4" 300 ANSI FP NUTRON SOUR BALL VALVE
SERIAL NO: 554598006

4" 300 ANSI STREAM FLO SOUR CHECK
VALVE

3" 300 ANSI WHEATLEY SOUR CHECK
VALVES SERIAL NO: VW-6624-14

2" 300 ANSI STREAM FLO WAFER CHECK
VALVE NACE SERIAL NO: 133989-76

2" 300 ANSI FP NUTRON SOUR BALL VALVE
SERIAL NO: 520951048, 512195003

2" 300 ANSI KF BALL VALVE NACE
SERIAL NO: 253731

2" 300 ANSI WHEATLEY SOUR CHECK
VALVE SERIAL NO: 705001-62

2" THRD SFI CROWN CHECK VALVE NACE
2000

2" THRD DHV BALL VALVES 2000

1 1/2" 300 ANSI SFI NACE CROWN CHECK
VALVE PART NO: BF-150650-4130



**ENCANA
UNIT # 90372**

COMPONENTS CONTINUED

VALVES CONT:

1" SFI CROWN CHECK VALVE NACE 2000

1" THRD DHV BALL VALVE 2000

1" THRD CROWN CHECK VALVE NACE

1" THRD LOCKING EXCALIBUR BALL
VALVES 2000

1" THRD ALTA Y-STRAINER CL800

1" THRD JAG SPRING VALVE 2000

3/4" THRD DHV BALL VALVES 200

1/2" THRD ALTA Y-STRAINER CL800

1/2" THRD PANAM 316SS NEEDLE VALVES

1/2" THRD DHV BALL VALVES 2000

3/8" SWAGELOK SS-CHS6-1 CHECK VALVE

3/8" THRD DHV BALL VALVE 2000

3/8" THRD CCI THERMAL TECHNOLOGIES
INC. BALL VALVE 600 WOG

1/4" THRD MERIDIAN BALL VALVES 2000

1/4" SWAGELOK SS-CHS4-1 CHECK VALVE

1/4" THRD PANAM 316 SS MINI NEEDLE
VALVES

1/4" SWAGELOK SS-4-ST, STREET TEES

RECOMMENDED SPARE PARTS LIST:

Engine: Caterpillar 3306 ATAAC

- 1 - Alternator (Altronic 590-110-G)
- 2 - 24" L/T Lead (Altronic 593022-24)
- 2 - Ignition Coil (Altronic 591011A)
- 4 - Boot Coil (Caterpillar 106-9185)
- 12 - Spark Plug (Champion RTN79G)
- 6 - Engine Oil Filter Element (Caterpillar IR-0716) or (Donaldson P554005)
- 2 - Fuel Gas Filter Element (Deltech 3154827)
- 2 - Air Filter (Caterpillar 6I-2561) or (Donaldson P532501/P532502)
- 3 - Fan Belt (13A1855)
- 3 - Compressor Oil Pump Belt (B-50) – Mycom Only
- 1 - Water Pump (Caterpillar 7N6210)
- 1 - Valve Cover Gaskets (Caterpillar 1331247)
- 3 - Inlet Gas Filter Elements: Particulate Filter (Nafco 29-335K5) Coalescing Filter (2-340)
- 20 - Chevron HDAX-40 (Engine Oil)

Compressor:

- 8 - Oil Coalescing Filter Element (Peco PCGH-312C)
- 6 - Spin On Oil Filters (Donaldson P165569)
- 10 Gal Compressor Oil (Jiro SPG-100)

Notes:

Radiator: 9000
Cooler: GHT J2500 Gas/Oil Cooler
Inlet Gas Filter: 4DOLL-ASS
Fan: 44" Crowley



**ENCANA
UNIT # 90372**

FITTINGS:

DESCRIPTION:	MATERIAL:	HEAT NO:
4" CUSTOM COMPANION FLANGE	SA516-70N	6253-07
3" CUSTOM COMPANION FLANGE	SA516-70N	6252-19
6" 300 SCH 40 RF WN FLANGE	SA-105N	63416
6" X 3" SCH 40 CONC REDUCER	SA234-WPB	05M20008
4" 300 SCH 40 RF WN FLANGES	SA-105N	212A5, 34848
4" 150 SCH 40 RF WN FLANGES	SA-105N	79597
4" SCH 40 90 DEG WELD ELLS LR	SA234-WPB	2528, 05M00009
4" SCH 40 45 DEG WELD ELLS	SA234-WPB	0510, 5761, 05N00023
4" X 3" SCH 80 CONC REDUCER	SA234-WPB	
4" X 3" SCH 40 CONC REDUCER	SA234-WPB	5H4244
4" X 2" SCH 80/SCH 40 RED TEE	SA234-WPB	04E10167, 48E10026
3" 300 SCH 40 RF WN FLANGES	SA-105N	113A5, 13142, 374A5
3" 150 SCH 40 RF WN FLANGES	SA-105N	77585
3" 300 HUB FLANGE TAP 2"	SA-105N	78635
3" SCH 40 90 DEG WELD ELLS LR	SA234-WPB	4F9584
3" SCH 40 90 DEG WELD ELLS SR	SA234-WPB	616A
3" SCH 40 45 DEG WELD ELLS	SA234-WPB	05M00034
3" SCH 40 WELD TEE	SA234-WPB	5H2148, 6H5281
3" X 2" SCH 40 X SCH 80 CONC RED	SA234-WPB	49A20177, 48N20006
3" X 2" SCH 40 X SCH 80 RED TEE	SA234-WPB	345780
3" X 2" SCH 80 X SCH 40 SWAGE	SA234-WPB	JAYN
3" X 2 1/2" SCH 40/SCH 80 CONC RED	SA234-WPB	5H1855
3" X 1 1/2" SCH 40 X SCH 80 CONC RED	SA234-WPB	48D20004
2 1/2" 150 SCH 80 RF WN FLANGE	SA-105N	79550
2" 300 SCH 80 RF WN FLANGES	SA-105N	76322, 72437
2" 300 BLIND FLANGE RF	SA-105N	282
2" 300 SLIP ON FLANGE	SA-105N	35730
2" SCH 80 90 DEG WELD ELLS LR	SA234-WPB	0018, B257
2" SCH 80 90 DEG WELD ELLS SR	SA234-WPB	562B
2" SCH 80 45 DEG WELD ELLS	SA234-WPB	401A
2" SCH 80 WELD TEE	SA234-WPB	5B6064
2" FS THREAD-O-LETS 3000	SA-105N	56845
2" FS THRD UNIONS 3000	SA-105N	UPO
2" FS THRD 90 DEG ELLS 3000	SA-105N	A88
2" FS THRD TEE 3000	SA-105N	EEA

FITTINGS

DESCRIPTION:	MATERIAL:	HEAT NO:
1 1/2" 300 SCH 80 RFWN FLANGE	SA-105N	4304192
1 1/2" SCH 80 90 DEG WELD ELLS LR	SA234-WPB	4K
1 1/2" SCH 80 WELD TEE	SA234-WPB	4G
1 1/2" FS THRD UNIONS 3000	SA-105N	66U
1 1/2" FS THRD TEES 2000	SA-105N	ZZ7
1 1/2" X 1" SCH XH SWAGE TBE	SA234-WPB	33798, K1149
1" FS THREAD-O-LETS 3000	SA-105N	56563, 56895, 56503, 56645, 56272, 57008
1" FS ELBOW-O-LETS 3000	SA-105N	56537
1" FS THRD 90 DEG ELLS 3000	SA-105N	098
1" FS THRD 45 DEG ELLS 3000	SA-105N	2475
1" FS THRD UNIONS 3000	SA-105N	UU
1" FS THRD TEES 3000	SA-105N	037, H89
1" FS THRD CROSS 3000	SA-105N	TH6
1" X 1/4" SCH XH SWAGE TBE	SA234-WPB	78196
3/4" FS THREAD-O-LETS 6000	SA-105N	56645, 56251
3/4" FS ELBOW-O-LETS 6000	SA-105N	56250
3/4" FS ELBOW-O-LETS 3000	SA-105N	56338
1/2" FS THREAD-O-LETS 6000	SA-105N	56578, 56814
1/2" FS THREAD-O-LETS 3000	SA-105N	56599, 56598
1/2" FS ELBOW-O-LETS 6000	SA-105N	56436
1/2" FS ELBOW-O-LETS 3000	SA-105N	5599
1/2" FS THRD TEES 3000	SA-105N	TH4
1/2" FS THRD CROSS 3000	SA-105N	TN2
1/4" FS THRD TEE 3000	SA-105N	TG4
PIPE:		
4" SCH 40 SMLS PIPE	SA-106B	4LC-40, 4CM-40
3" SCH 40 SMLS PIPE	SA-106B	3EV-40, 3FA-40
2" SCH 160 SMLS PIPE	SA-106B	2DQ-160
2" SCH 80 SMLS PIPE	SA-106B	2DM-80, 2DN-80, 2DQ-80
1 1/2" SCH 80 SMLS PIPE	SA-106B	1.5AN-80
1" SCH 80 SMLS PIPE	SA-106B	1CH-80



ENCANA
UNIT # 90372

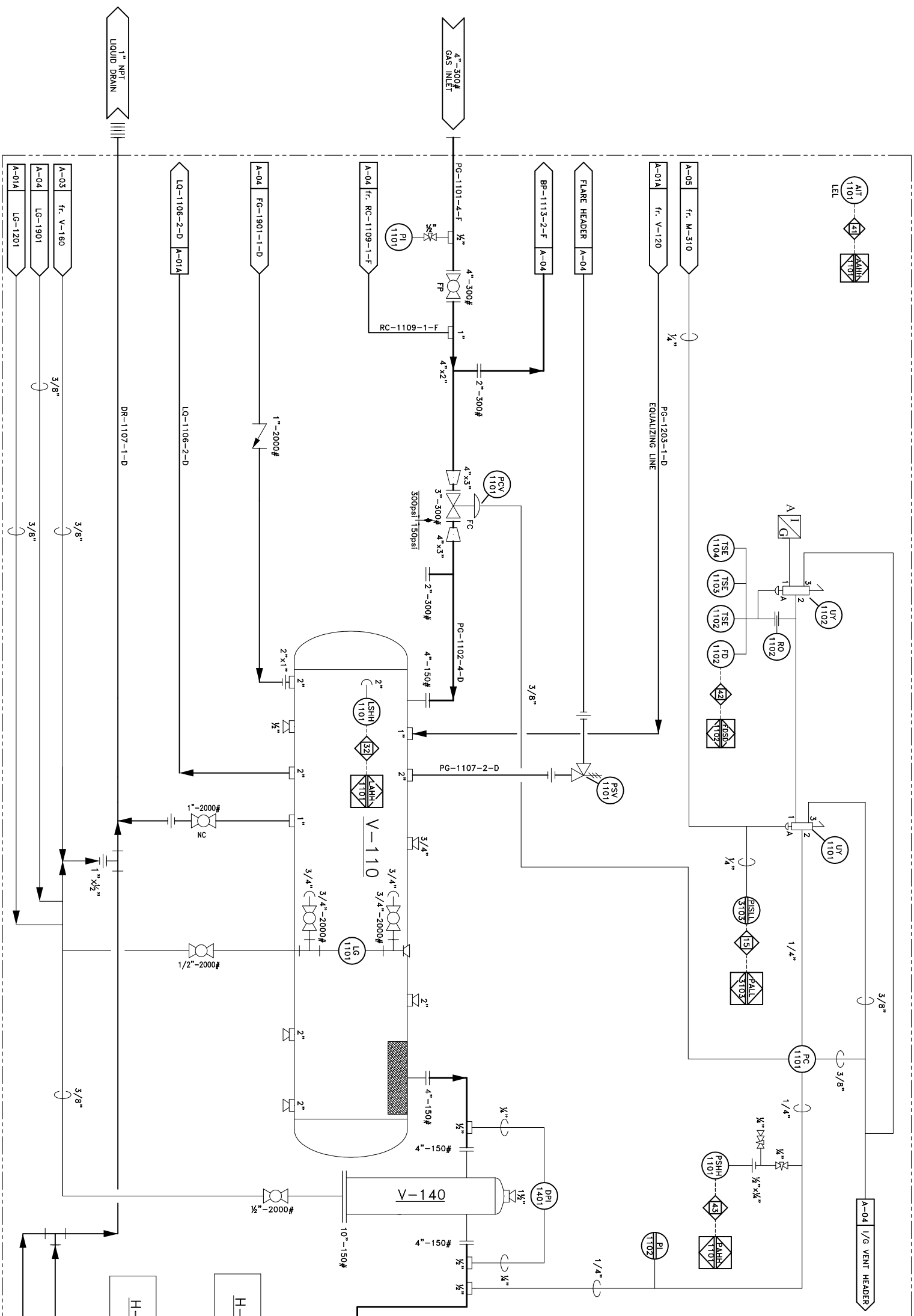


V-110 SUCTION SCRUBBER
 Manufacturer: PENFABCO LTD.
 Size: 30" x 72" S/S
 Rated: 285psi @ 100°F
 1/8" CA

V-140 INLET GAS FILTER
 Manufacturer: JIRO EMERFLEX LTD.
 Size: 10" x 34 5/16" S/S
 Rated: 200psi @ 100°F
 COALESCING
 1/8" CA

H-410 NATURAL GAS HEATER
 Manufacturer: CIS-CAN
 Size: 24" x 24"
 16,000 btu/hr
 12 Volt Start
 Protection Grill

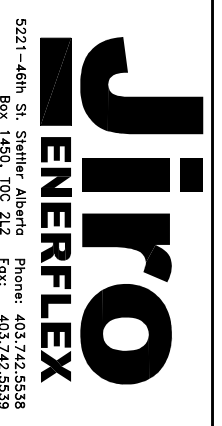
H-420 NATURAL GAS HEATER
 Manufacturer: CIS-CAN
 Size: 24" x 24"
 16,000 btu/hr
 12 Volt Start
 Protection Grill



LINE TYPE LEGEND

PROCESS TUBING/ INSTRUMENT SUPPLY	
MAIN PROCESS GAS	
SECONDARY PROCESS	
UTILITY PROCESS	
PNEUMATIC SIGNAL	
HYDRAULIC SIGNAL	
ELECTRIC SIGNAL	

REV.	DESCRIPTION	DATE	BY	CHKD	APPD
1	AS BUILT	07-03-19	WST	ASR	
0	ISSUED FOR CONSTRUCTION	07-01-29	SLS	ASR	



9000 SERIES COMPRESSOR
 G.D. SSP w/ 3306 ATAC ENGINE
 SKID MOUNTED, SOUR SERVICE

ENCANA
 DATE: 07-01-29
 SCALE: N.T.S.
 DRAWING NO.: CDL-90372-A-01
 REV.: 1

MATERIAL LIST

ITEM	DESCRIPTION	MAKE	MODEL
PSV-1101	PRESSURE SAFETY VALVE, 2"x2" NPT, SET @ 150 psi	MERCER	G ORIFICE
HS-1101	EMERGENCY SHUTDOWN HAND SWITCH	TELEMECANIQUE	#PAL 87423H7
LSHH-1101	LEVEL SHUTDOWN HIGH	MURPHY	L1200
UY-1101	PRESSURE SWITCH, TYPE CP	AMOT	4057D025H2
PC-1101	PRESSURE CONTROLLER, SPRING RANGE 0-100 psi	FISHER	4150KR
PCV-1101	PRESSURE CONTROL VALVE - FC, 3"-300# V-BALL	FISHER	V-200 SR B
LG-1101	LEVEL GAUGE, c/w 3/4"-2000# BALL VALVES	JERGUSON	68-1782040AN
PI-1101	PRESSURE INDICATOR 1/2" LM x 4" FACE, 0-400psi/0-2800KPa	WIKA	SSLF
PI-1102	PRESSURE INDICATOR 1/2" LM x 4" FACE, -50Hg-100psi/-100-700KPa	WIKA	SSLF
PISLL-3103	PRESSURE INDICATING SWITCH/GAGE, 0-150psi/0-1000KPa	MURPHY	A25PEF-150
DPI-1401	DIFFERENTIAL PRESSURE INDICATOR, 0-50psi/0-350KPa	MIDWEST	120A-00-00
PCV-4101	PRESSURE CONTROL VALVE, SET @ 1/2 psi	FISHER	912N
PCV-4201	PRESSURE CONTROL VALVE, SET @ 1/2 psi	FISHER	912N
PCV-4102	PRESSURE CONTROL VALVE	CCI THERMAL	RTZ-11-15B
PCV-4202	PRESSURE CONTROL VALVE	CCI THERMAL	RTZ-11-15B
TSDV-4101	TEMPERATURE SHUTDOWN VALVE, c/w HEATER	CCI THERMAL	ASV-375
TSDV-4201	TEMPERATURE SHUTDOWN VALVE, c/w HEATER	CCI THERMAL	ASV-375
PSHH-1101	PRESSURE SWITCH HIGH, SET @ 50psi Inc.	CCS	6900GZE16
AIT-1101	LEL DETECTION	MLP-LP-SC-1100	NET SAFETY
UY-1102	PRESSURE SWITCH, TYPE: CP	AMOT	4057D025H2
FD-1102	FIRE DETECTION CONTROLLER, 15 psi FALLING	CCS	6900GE12
TSE-1102	TEMPERATURE SAFETY ELEMENT, GREEN, SET @ 255°F(124°C)	SWAGelok	SS-6-FTA-255
TSE-1103	TEMPERATURE SAFETY ELEMENT, GREEN, SET @ 255°F(124°C)	SWAGelok	SS-6-FTA-255
TSE-1104	TEMPERATURE SAFETY ELEMENT, RED, SET @ 281°F(138°C)	SWAGelok	SS-6-FTA-281
RO-1102	RESTRICTION ORIFICE, 0.014"	AMOT	2185L-011

LINE SPEC.

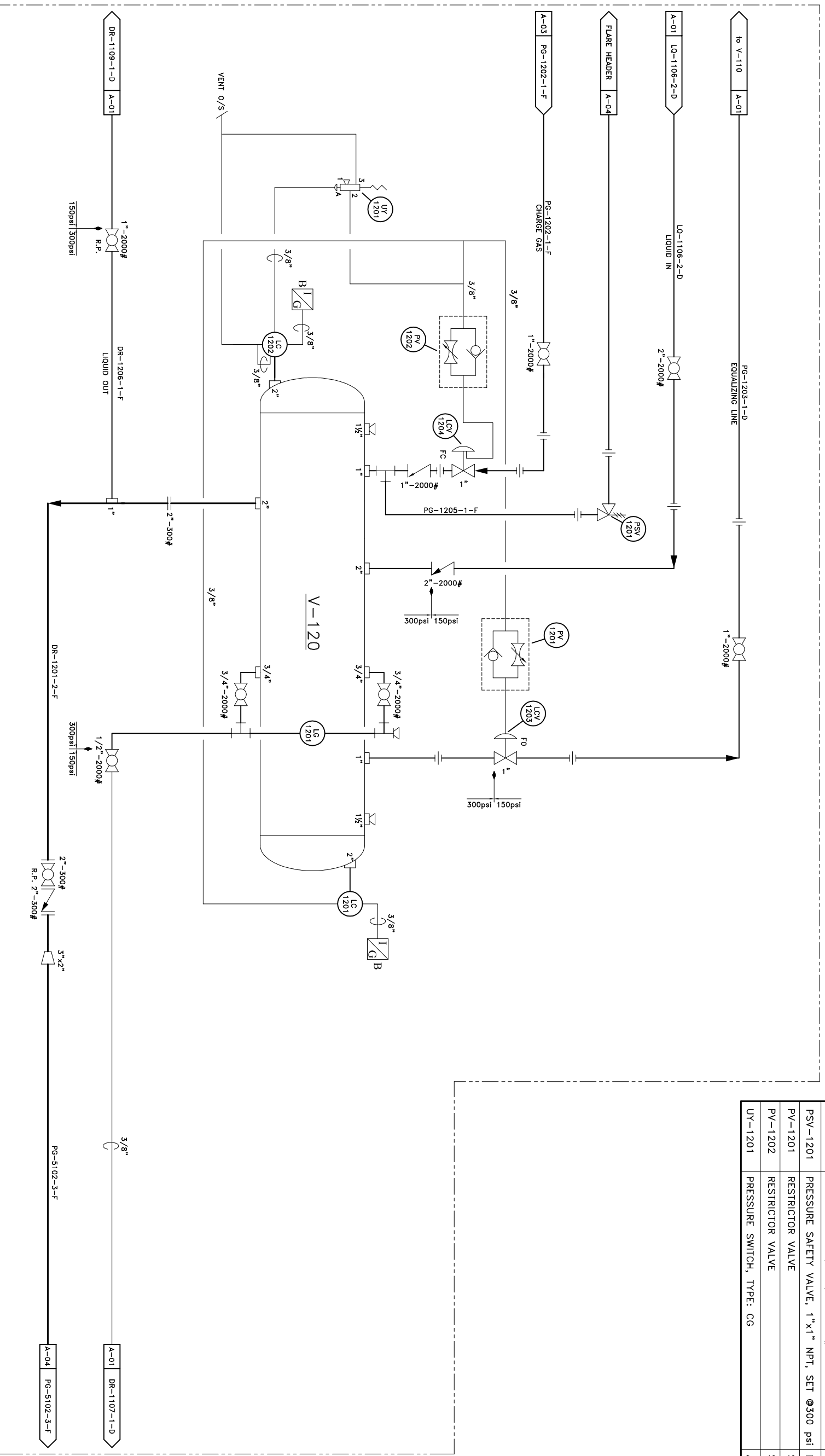
A	= 20psi
B	= 50psi
C	= 100psi
D	= 150psi
F	= 300psi

V-120 BLOWCASE

Manufacturer: ENERFLEX-STETTLER
 Size: 16" x 60" S/S
 Rated: 669psi @ 230°F
 No. of Cycles: 1,000,000
 Differential Cycle: 0psi TO 300psi
 1/8" CA

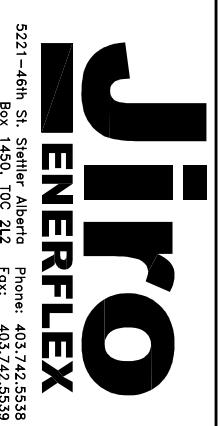
MATERIAL LIST

ITEM	DESCRIPTION	MAKE	MODEL
LC-1201	LEVEL CONTROLLER	MURPHY	L1200N
LC-1202	LEVEL CONTROLLER	MURPHY	L1200NDVO
LCV-1203	LEVEL CONTROL VALVE, 1" NPT, 1/2" PORT F.O.	NORRISSEAL	SN40DTV-9BA2
LCV-1204	LEVEL CONTROL VALVE, 1" NPT, 1/2" PORT F.C.	NORRISSEAL	SN40RTV-9BA4
LG-1201	LEVEL GAUGE, c/w 3/4"-2000# BALL VALVES	JERGUSON	68-17R2040AN
PSV-1201	PRESSURE SAFETY VALVE, 1"x1" NPT, SET @300 psi	MERCER	"E" ORIFICE
PV-1201	RESTRICTOR VALVE	SMC	NAS4000
PV-1202	RESTRICTOR VALVE	SMC	NAS4000
UY-1201	PRESSURE SWITCH, TYPE: CG	AMOT	4057D031H2



LINE TYPE LEGEND	
	PROCESS TUBING/ INSTRUMENT SUPPLY
	MAIN PROCESS GAS
	SECONDARY PROCESS
	UTILITY PROCESS
	PNEUMATIC SIGNAL
	HYDRAULIC SIGNAL
	ELECTRIC SIGNAL

REV.	DESCRIPTION	DATE	BY	CHKD	APPD
0	ISSUED FOR CONSTRUCTION	07-01-29	SLS	WST	ASR
1	AS BUILT	07-03-19	SLS	WST	ASR



9000 SERIES COMPRESSOR
 G.D. SSP w/ 3306 ATAAC ENGINE
 SKID MOUNTED, SOUR SERVICE

COMPANY: ENCANA
 JOB NO.: 90372

Drawn by: SLS
 Checked by: WST
 Approved by: ASR

DATE: 07-01-29
 SCALE: N.I.S.
 DRAWING NO.: CDL-90372-A-01A
 REV.: 1

5221-46th St. Stettler, Alberta Phone: 403.742.5538
 Box 1450, T0C 2L2 Fax: 403.742.5539

S-210
SCREW COMPRESSOR
 Manufacturer: GARDNER DENVER
 Model: SSPG-99D
 max. of 50psi SUCTION
 max. of 300psi DISCHARGE
 Adjustable VI
 BELL HOUSING MOUNTED

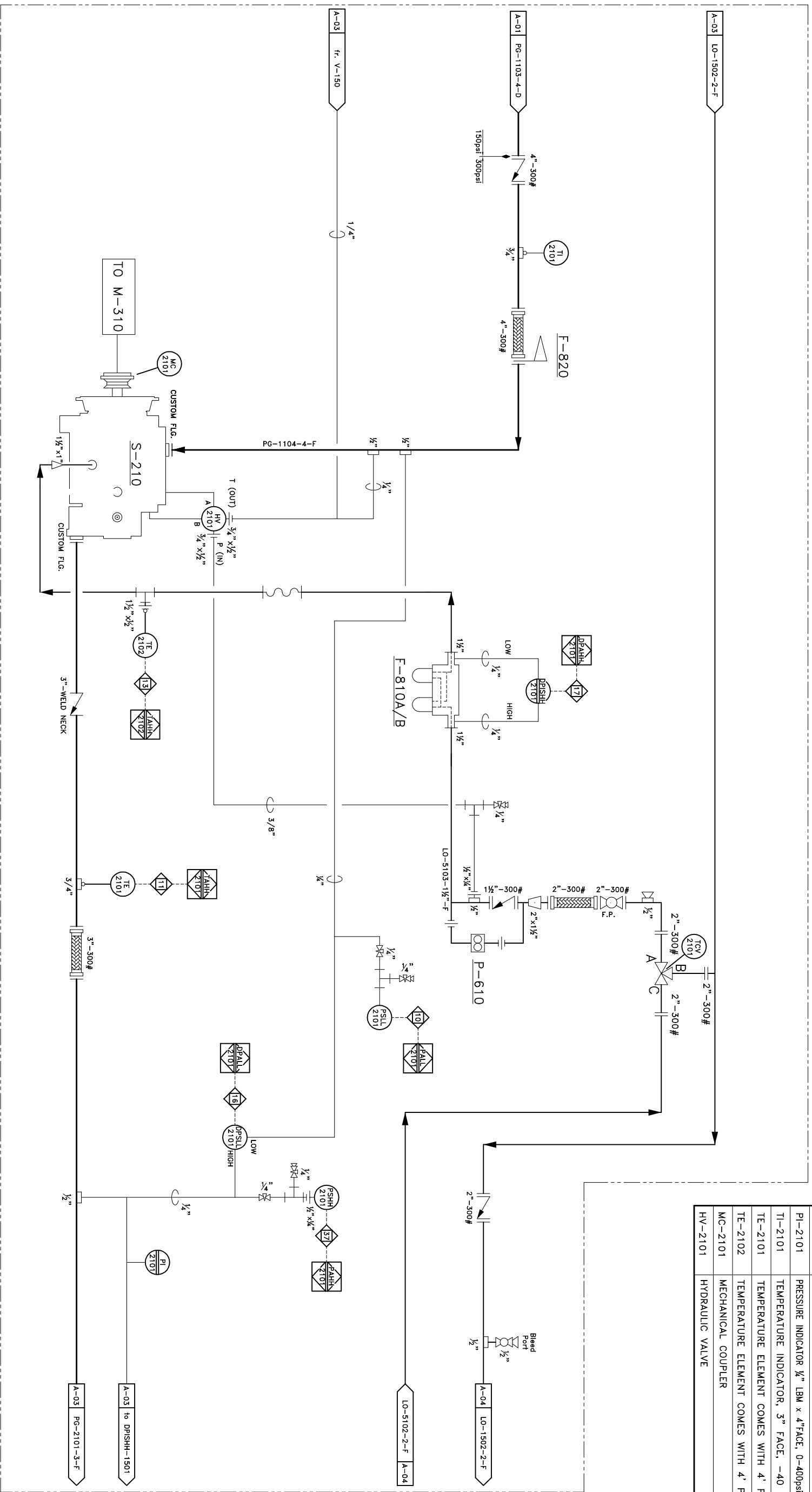
F-820
CONICAL STRAINER
 Manufacturer: ALBERTA STRAINER
 Model: 4" - 600#
 Type: STAINLESS STEEL
 40/40 TYPE MESH
 150% OPEN AREA

F-810A/B
OIL FILTERS
 Manufacturer: DONALDSON
 Model: HMK25
 Max Working Press: 350psi @ 250°F
 Part: P169984
 Filter: P165569

P-610
LUBE OIL PUMP
 c/w GARDNER DENVER SSP SCREW

MATERIAL LIST

ITEM	DESCRIPTION	MAKE	MODEL
TCV-2101	THERMOSTATIC CONTROL VALVE, 340psi, SET @ 180°F	AMOT	2BHCT18001
DPSSL-2101	DIFFERENTIAL PRESSURE SWITCH, SET @ 25psi FALLING	CCS	604D12
DPISHH-2101	DIFFERENTIAL PRESSURE INDICATOR, 0-30psid, SET @ 15psi RISING	MIDWEST	120-AA-00-0(CA)
PSLL-2101	PRESSURE SWITCH LOW, SET @ 1psi Dec.	SOR	56AG-EF316 M4-C1A-NCCV
PSHH-2101	PRESSURE SWITCH HIGH, SET @ 285psi Inc.	CCS	6900GZET18
PI-2101	PRESSURE INDICATOR 1/2" LBM x 4"FACE, 0-400psi/0-2800kPa	WIKA	SSLF
TI-2101	TEMPERATURE INDICATOR, 3" FACE, -40 TO 160°F	TREND	4" STEM
TE-2101	TEMPERATURE ELEMENT COMES WITH 4" PYROLEAD	WIKA	6" STEM
TE-2102	TEMPERATURE ELEMENT COMES WITH 4" PYROLEAD	WIKA	6" STEM
MC-2101	MECHANICAL COUPLER	ARCUSAFLEX	ACT-4NNF-3030
HV-2101	HYDRAULIC VALVE	CROSS	BA12AD5AE0



LINE TYPE LEGEND

	PROCESS TUBING/ INSTRUMENT SUPPLY
	MAIN PROCESS GAS
	SECONDARY PROCESS
	UTILITY PROCESS
	PNEUMATIC SIGNAL
	HYDRAULIC SIGNAL
	ELECTRIC SIGNAL

REV.	DESCRIPTION	DATE	BY	CHKD/APPD
1	AS BUILT	07-03-19	WST	ASR
0	ISSUED FOR CONSTRUCTION	07-01-29	SLS	

Jiro
ENERFLEX
 5221-46th St. Stettler Alberta
 Box 1450, T0C 2L2
 Phone: 403.742.5538
 Fax: 403.742.5539

9000 SERIES COMPRESSOR
 G.D. SSP w/ 3306 ATAC ENGINE
 SKID MOUNTED, SOUR SERVICE

COMPANY: ENCANA
 JOB NO.: 90372
 Drawn by: SLS
 Checked by: WST
 Approved by: ASR
 DATE: 07-01-29
 SCALE: N.T.S.
 DRAWING NO.: CDL-90372-A-02
 REV.: 1

V-160
FUEL GAS SCRUBBER

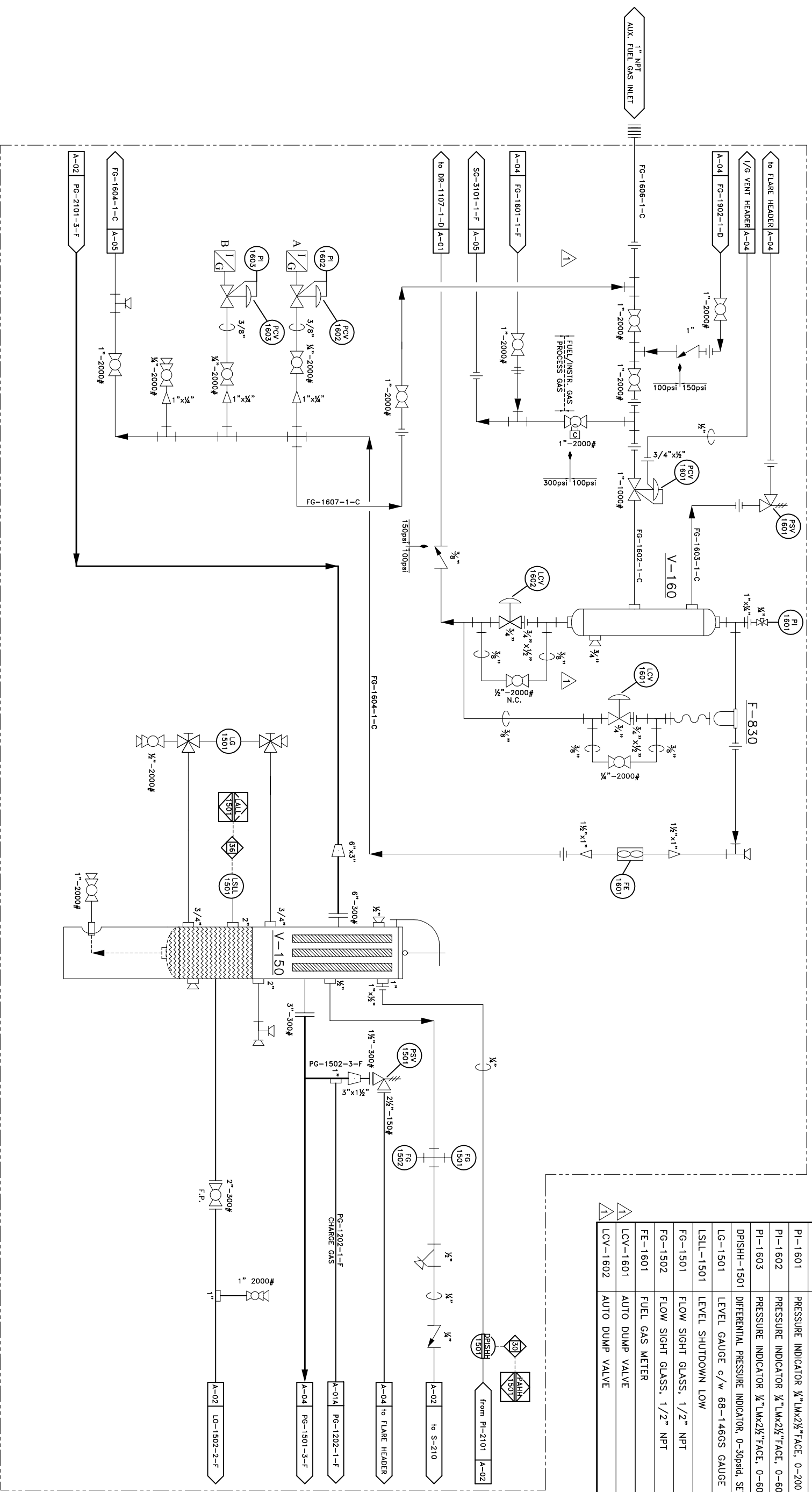
Manufacturer: ENERFLEX-STETTLER
 Size: 4" x 36" S/S
 Rated: 500psi @ 350°F
 1/8" CA

F-830
FUEL GAS FILTER

Manufacturer: SPX AIR TREATMENT
 Model: 3154826
 Flow: 100SCFM @ 100psi
 Element: 3161232 (0.1 MICRON)
 MAWP: 250psi @ 150°F

V-150
OIL COALESCING SEPARATOR

Manufacturer: PENFABCO LTD.
 Size: 24" x 56" S/S
 Rated: 350psi @ 250°F
 5-12" COALESCING ELEMENTS
 1/8" CA



MATERIAL LIST

ITEM	DESCRIPTION	MAKE	MODEL
PSV-1501	PRESSURE SAFETY VALVE, 1 1/2"-300#x2 1/2"-150#, SET @ 300psi	MERCER	G ORIFICE
PSV-1601	PRESSURE SAFETY VALVE, 1"x1" NPT, SET @ 100 psi	MERCER	E ORIFICE
PCV-1601	PRESSURE CONTROL VALVE, SPRING RANGE 70-150psi, 3/16" PORT	FISHER	627-488
PCV-1602	PRESSURE CONTROL VALVE, SPRING RANGE 0-35psi	FISHER	67CFR-3621B
PCV-1603	PRESSURE CONTROL VALVE, SPRING RANGE 0-35psi	FISHER	67CFR-3621B
PI-1601	PRESSURE INDICATOR 1/2" LMx2 1/2" FACE, 0-200 psi/0-1400kpa	USG	SSLF
PI-1602	PRESSURE INDICATOR 1/2" LMx2 1/2" FACE, 0-60 psi/0-420kpa	WIKA	SSLF
PI-1603	PRESSURE INDICATOR 1/2" LMx2 1/2" FACE, 0-60 psi/0-420kpa	WIKA	SSLF
DPSHH-1501	DIFFERENTIAL PRESSURE INDICATOR, 0-30psid, SET @ 20psi RISING	MID-WEST	120-AA-00-(0CA)
LG-1501	LEVEL GAUGE c/w 68-146GS GAUGE VALVES	JERGUSON	68-17R2040AN
LSLL-1501	LEVEL SHUTDOWN LOW	MURPHY	L1200
FG-1501	FLOW SIGHT GLASS, 1/2" NPT	AC&R	SG-04
FG-1502	FLOW SIGHT GLASS, 1/2" NPT	AC&R	SG-04
FE-1601	FUEL GAS METER	ROOTS	8C175
LCV-1601	AUTO DUMP VALVE	WATSON MCDANIEL	WLD-1800
LCV-1602	AUTO DUMP VALVE	WATSON MCDANIEL	WLD-1800

LINE TYPE LEGEND

	PROCESS TUBING/INSTRUMENT SUPPLY
	MAIN PROCESS GAS
	SECONDARY PROCESS
	UTILITY PROCESS
	PNEUMATIC SIGNAL
	HYDRAULIC SIGNAL
	ELECTRIC SIGNAL

REV.	DESCRIPTION	DATE	BY
2	AS BUILT	07-03-19	SLS
1	REVISED FOR SC-1726-C1 & SC-1731-C1	07-02-14	SLS
0	ISSUED FOR CONSTRUCTION	07-01-29	SLS

5221-46th St. Stettler, Alberta
 Box 1450, T0C 2L2
 Phone: 403.742.5538
 Fax: 403.742.5539

9000 SERIES COMPRESSOR
 G.D. SSP w/ 3306 ATAAC ENGINE
 SKID MOUNTED, SOUR SERVICE

COMPANY: ENCANNA
 Drawn by: SLS
 Checked by: CAD
 Approved by: ENG
 DATE: 07-01-29
 SCALE: N.T.S.
 DRAWING NO.: CDL-90372-A-03
 JOB NO.: 90372
 REV.: 2

C-510 A/B

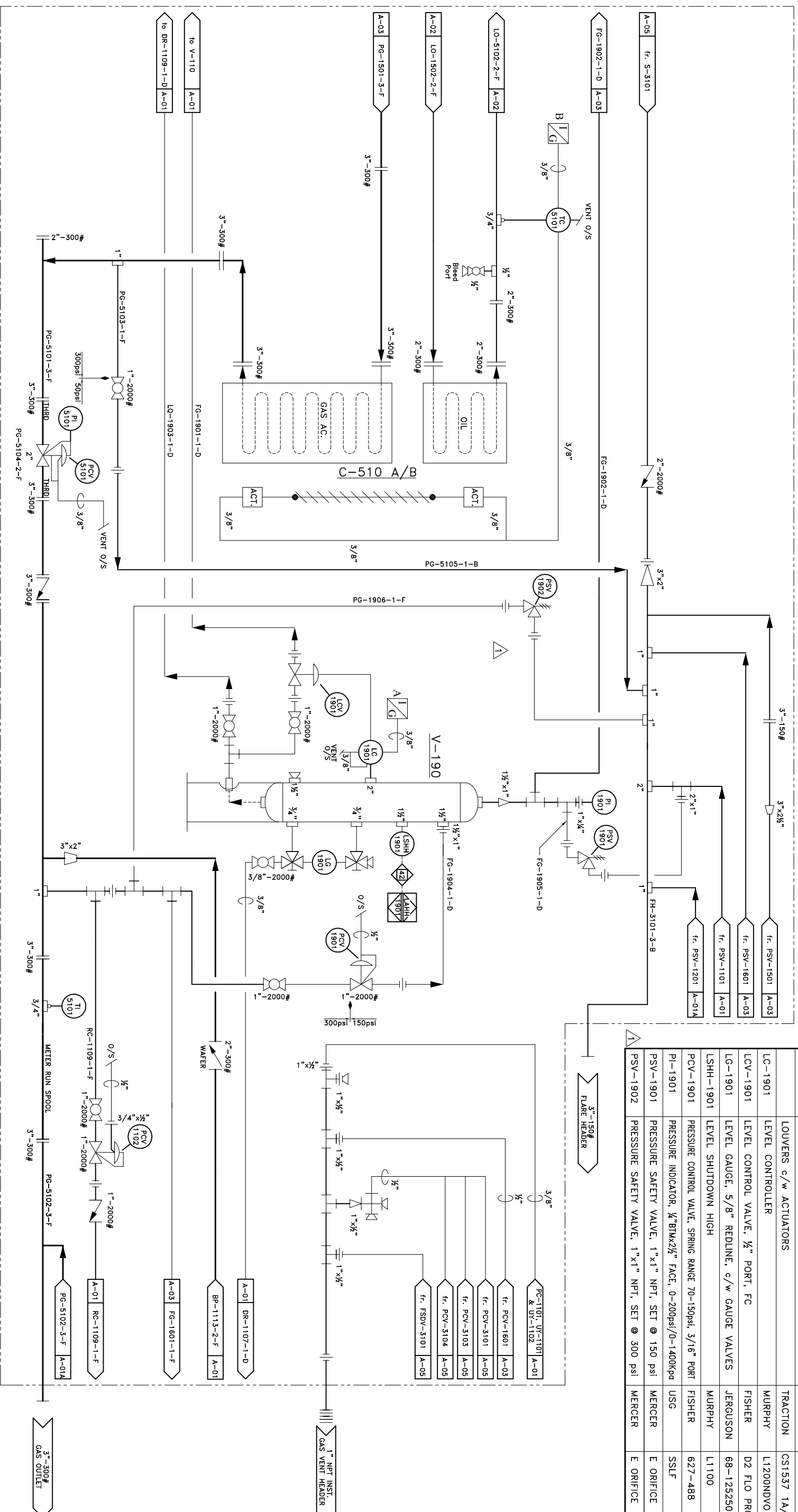
OIL/GAS AFTER COOLER

Manufacturer: GLOBAL HEAT TRANSFER
 Model: GHJ 2500 / SPLIT
 Gas Rated: 350psi @ 250°F
 Oil Rated: 350psi @ 250°F

V-190

FUEL GAS SCRUBBER

Manufacturer: IMPACT INDUSTRIAL SALES & SERVICE LTD.
 Size: 6-5/8" x 43" S/S
 MAWP: 350psi @ 250°F
 1/8" CA



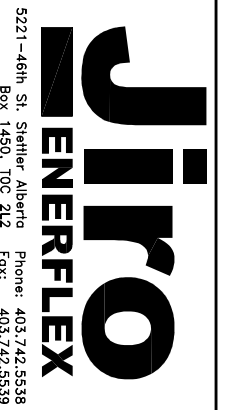
MATERIAL LIST

ITEM	DESCRIPTION	MAKE	MODEL
PCV-1102	PRESSURE CONTROL VALVE SET @ 5-20 psi, 3/8" PORT	FISHER	627-552
PCV-5101	BACK PRESSURE CONTROL VALVE (VTION)	KIMRAY	230SGTBPD-V
PI-5101	PRESSURE INDICATOR 1/2" LM x 2 1/2" FACE, 0-300psi/0-2100kPa	WIKA	SSLF
TI-5101	TEMPERATURE INDICATOR 3" FACE, -40 TO 160 °F	TREND	2 1/2" STEM
TC-5101	TEMPERATURE CONTROLLER	KIMRAY	HT-12
	LOUVERS c/w ACTUATORS	TRACTION	CS1537 1A/B
LC-1901	LEVEL CONTROLLER	MURPHY	L1200NDVO
LCV-1901	LEVEL CONTROL VALVE, 1/2" PORT, FC	FISHER	D2 FLO PRO
LG-1901	LEVEL GAUGE, 5/8" REDLINE, c/w GAUGE VALVES	JERGUSON	68-1252502A
LSHH-1901	LEVEL SHUTDOWN HIGH	MURPHY	L1100
PCV-1901	PRESSURE CONTROL VALVE, SPRING RANGE 70-150psi, 3/16" PORT	FISHER	627-488
PI-1901	PRESSURE INDICATOR, 1/2" BULKHEAD FACE, 0-200psi/0-1400kPa	USG	SSLF
PSV-1901	PRESSURE SAFETY VALVE, 1" x 1" NPT, SET @ 150 psi	MERCER	E ORIFICE
PSV-1902	PRESSURE SAFETY VALVE, 1" x 1" NPT, SET @ 300 psi	MERCER	E ORIFICE

LINE TYPE LEGEND

	PROCESS TUBING/ INSTRUMENT SUPPLY
	MAIN PROCESS GAS
	SECONDARY PROCESS
	UTILITY PROCESS
	PNEUMATIC SIGNAL
	HYDRAULIC SIGNAL
	ELECTRIC SIGNAL

REV.	DESCRIPTION	DATE	BY	CHKD	APPD
2	AS BUILT	07-03-19	SLS	WST	ASR
1	REVISED FOR SC-1721-C1	07-02-09	SLS	CAD	ENG
0	ISSUED FOR CONSTRUCTION	07-01-29	SLS		



9000 SERIES COMPRESSOR
 G.D. SSP w/ 3306 ATAAC ENGINE
 SKID MOUNTED, SOUR SERVICE

COMPANY: ENCANA
 JOB NO.: 90372

Drawn by: SLS
 Checked by: CAD
 Approved by: ENG

DATE: 07-01-29
 SCALE: N.I.S.
 DRAWING NO.: CDL-90372-A-04
 REV.: 2

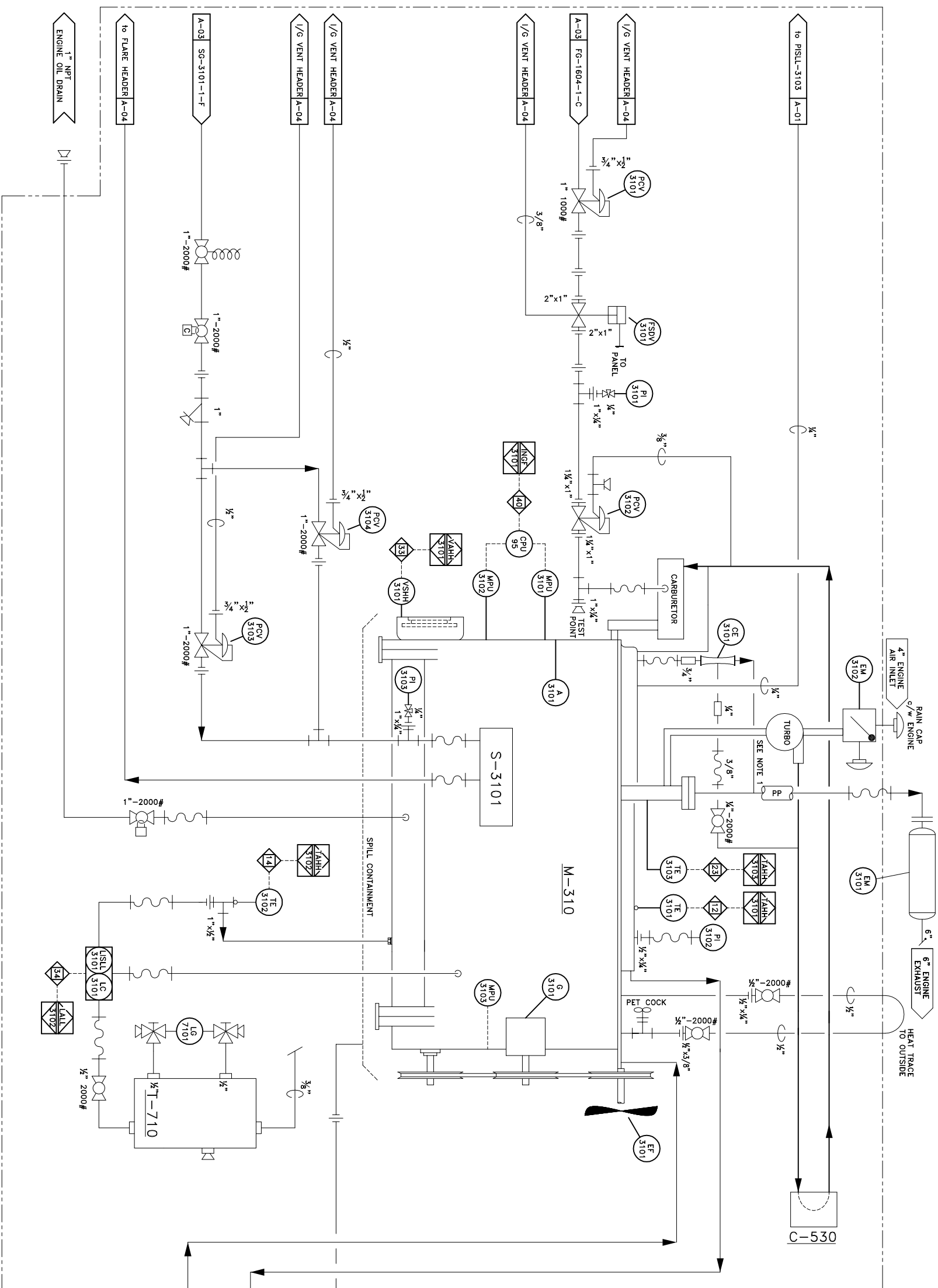
5221-46th St. Stettler Alberta Phone: 403.742.5538
 Box 1450, T0C 2L2 Fax: 403.742.5539

M-310
NATURAL GAS ENGINE
 Manufacturer: CATERPILLAR
 Model: G3306ATAAC
 220hp

T-710
ENGINE OIL DAY TANK
 Manufacturer: ENERFLEX
 Size: 209gal
 Part: OS-57

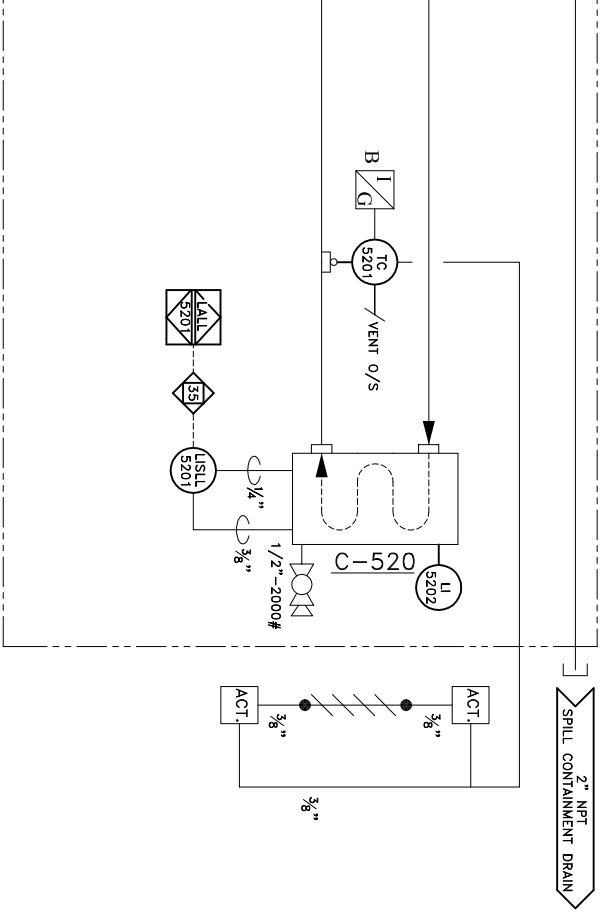
C-520
ENGINE WATER JACKET
 Manufacturer: GLOBAL HEAT TRANSFER
 Model: JIRO 01

C-530
AIR TO AIR COOLER
 Manufacturer: GLOBAL HEAT TRANSFER
 ALUMINUM (ASTRO CORE)
 Model: MAC011T



ITEM	DESCRIPTION	MAKE	MODEL
FSDV-3101	FUEL SHUT DOWN VALVE	MURPHY	M5081-C
VSHH-3101	VIBRATION SWITCH HIGH	MURPHY	VS-2E
USLL-3101	LEVEL INDICATING SHUT DOWN SWITCH, c/w LC-3101	KENCO	KLCE12
USLL-5201	LEVEL INDICATING SHUT DOWN SWITCH	MURPHY	EL150K1E
PCV-3101	PRESSURE CONTROL VALVE SET @ 5-20 psi, 1/2" PORT	FISHER	627-496
PCV-3102	PRESSURE CONTROL VALVE, c/w ENGINE	CAT	2W6022
PCV-3103	PRESSURE CONTROL VALVE, SPRING RANGE 15-40psi, 3/8" PORT	FISHER	627-553
PCV-3104	PRESSURE CONTROL VALVE, SPRING RANGE 15-40psi, 3/8" PORT	FISHER	627-553
TC-5201	TEMPERATURE CONTROLLER	KIMRAY	HT-12
LG-7101	LEVEL GAUGE, 5/8" REDLINE, c/w GAUGE VALVES	JERGUSON	68-1252502A
PI-3101	PRESSURE INDICATOR 1/2" LMx2 1/2" FACE, 0-60 psi/0-420 kPa	WIKA	SSLF
PI-3102	PRESSURE INDICATOR 1/2" LMx2 1/2" FACE, -30"HG-30psi/-100-200kPa	WIKA	LF
PI-3103	PRESSURE INDICATOR 1/2" LMx2 1/2" FACE, 0-100 psi/0-750 kPa	WIKA	SSLF
TE-3101	TEMPERATURE ELEMENT COMES WITH 2" PYROLEAD	WIKA	6" STEM
TE-3102	TEMPERATURE ELEMENT COMES WITH 2" PYROLEAD	WIKA	8" STEM
TE-3103	TEMPERATURE ELEMENT COMES WITH 4" PYROLEAD	WIKA	6" STEM
S-3101	STARTER	TDI TURBOSTART	T30-1
MPU-3101	MAGNETIC PICK UP, GEAR TOOTH (FLYWHEEL)	ALTRONIC	619118-1
MPU-3102	MAGNETIC PICK UP, RESET PIN (RESET)	ALTRONIC	619118-1
MPU-3103	MAGNETIC PICK UP, HALL EFFECT (PANEL)	ALTRONIC	591014-1
G-3101	24VDC GENERATOR	ELECTRODYNE	102499-HZ24
LI-5202	COOLANT SURGE TANK	CNH	435543A1
EF-3101	ENGINE FAN 44"	CROWLEY	44"
CE-3101	CRANKCASE EVACUATION VENTURI	PENBERTHY	LL3/4" JPO1C12E
CPU-95	IGNITION	ALTRONIC	791950-8
EM-3101	CRITICAL GRADE MUFFLER	SILEX	JB-6-SI
EM-3102	WARM AIR SELECTOR 4"	JIRO	OS-160
A-3101	ALTERNATOR	ALTRONIC	590110-G

NOTES:
 1. INSTALL EVAC SYSTEM CONNECTION ON A 45° ANGLE INTO THE EXHAUST EXTENTION



LINE TYPE LEGEND	PROCESS TUBING/ INSTRUMENT SUPPLY
—————	—————
—————	—————
—————	—————
—————	—————

REV.	DESCRIPTION	DATE	BY
1	AS BUILT	07-03-19	SLS
0	ISSUED FOR CONSTRUCTION	07-01-29	WST

JIRO
ENERFLEX

5221-46th St. Stettler, Alberta Phone: 403.742.5538
 Box 1450, T0C 2L2 Fax: 403.742.5539

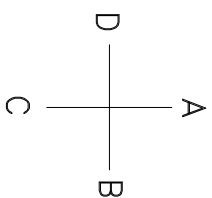
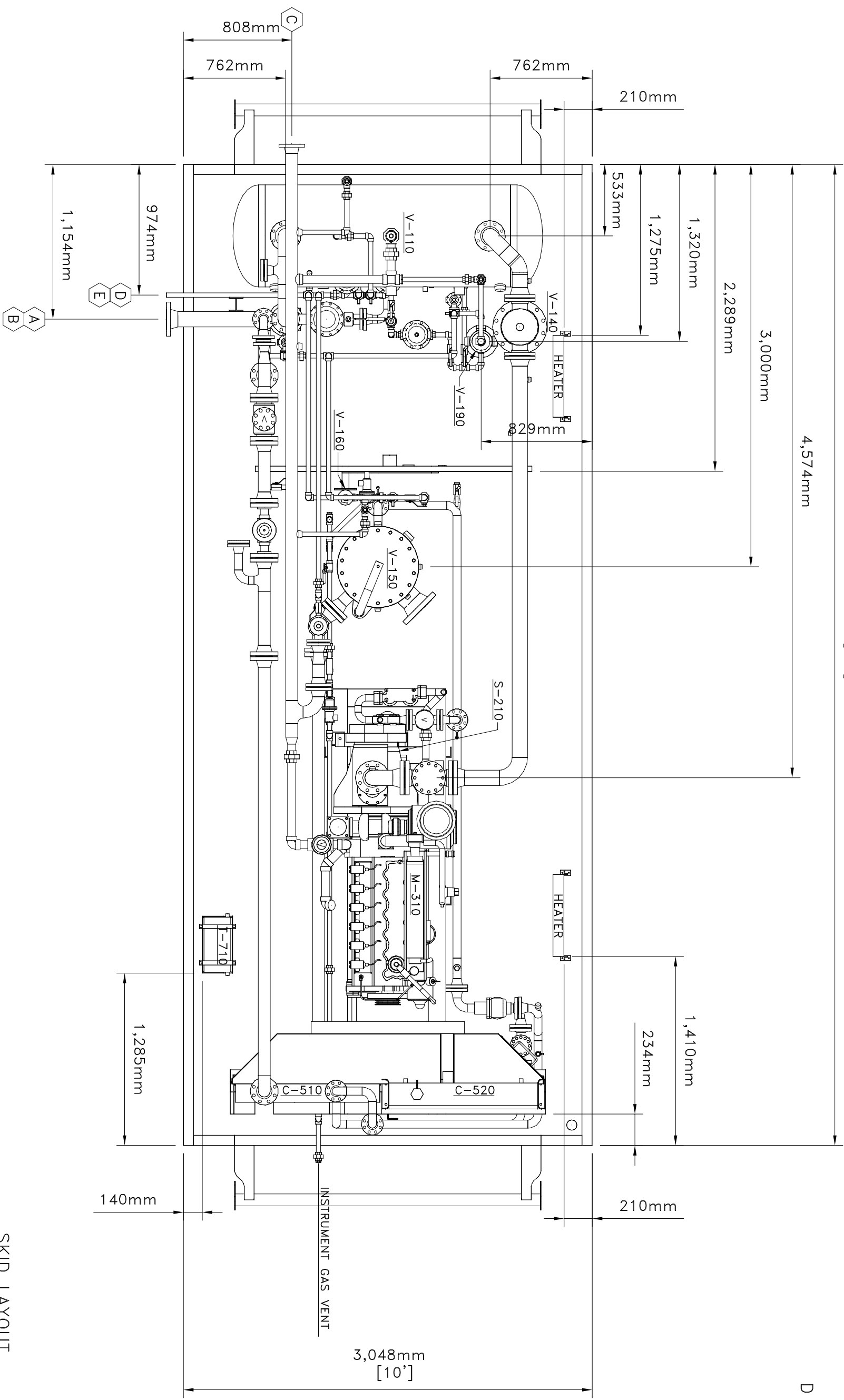
9000 SERIES COMPRESSOR
 G.D. SSP w/ 3306 ATAAC ENGINE
 SKID MOUNTED, SOUR SERVICE

COMPANY: ENCANA
 JOB NO.: 90372

Drawn by: SLS
 Checked by: WST
 Approved by: ASR

DATE: 07-01-29
 SCALE: N.T.S.
 DRAWING NO.: CDL-90372-A-05
 REV.: 1

7,315mm
[24']



SKID LAYOUT
SCALE 1:30

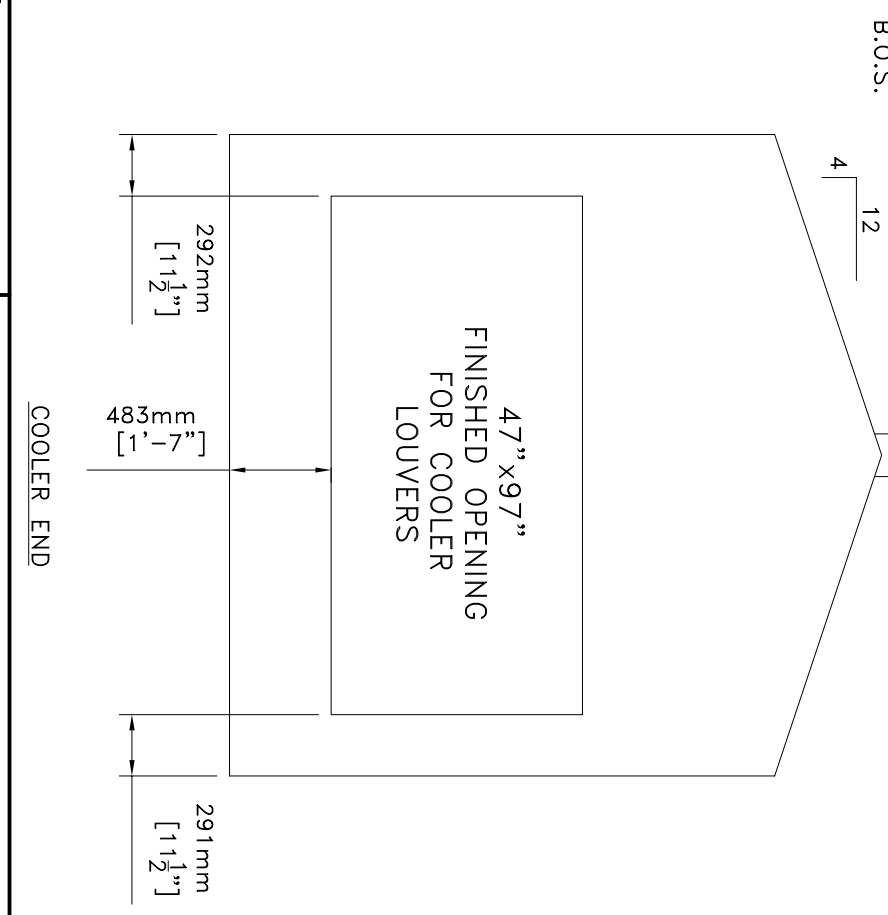
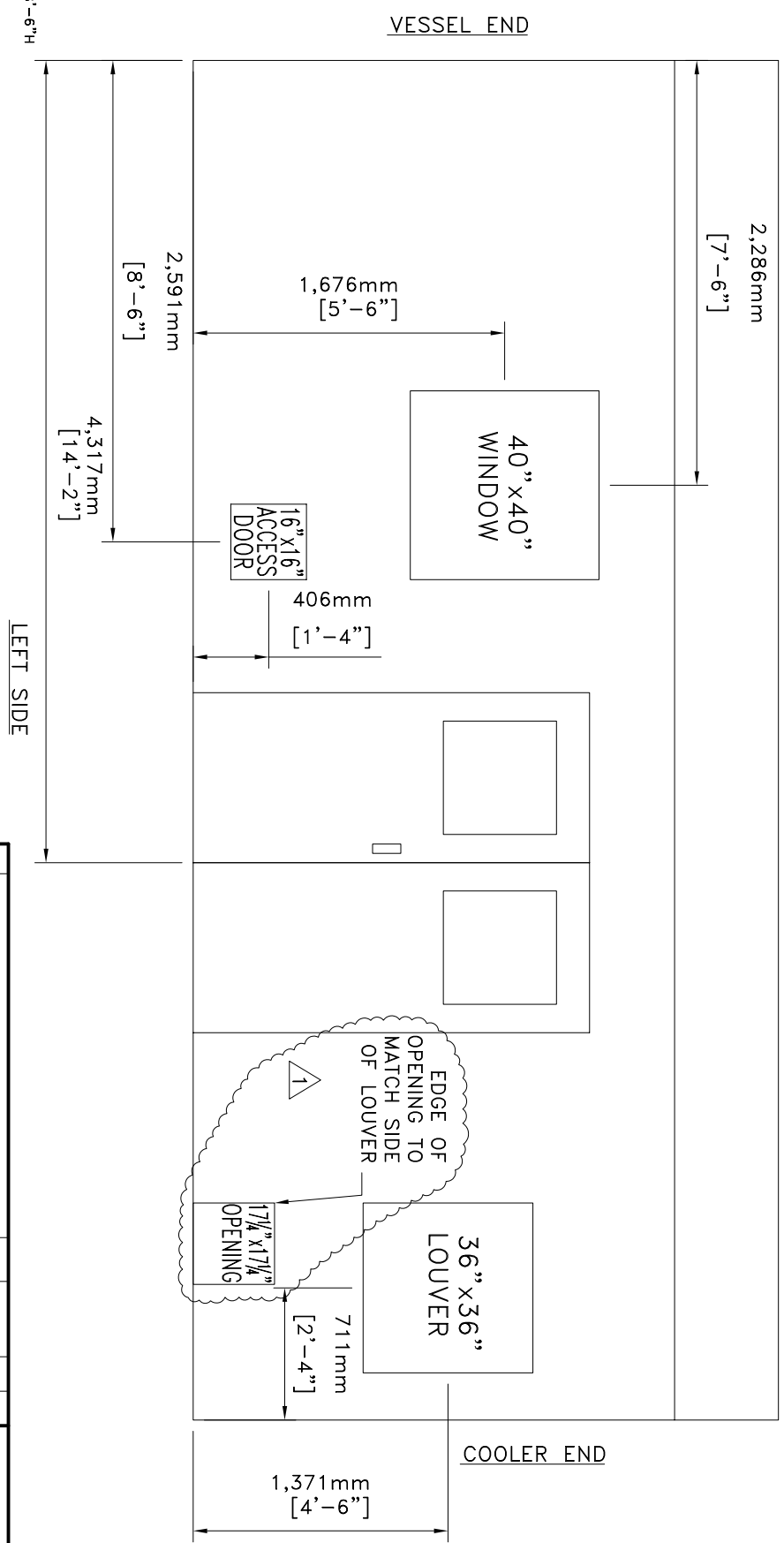
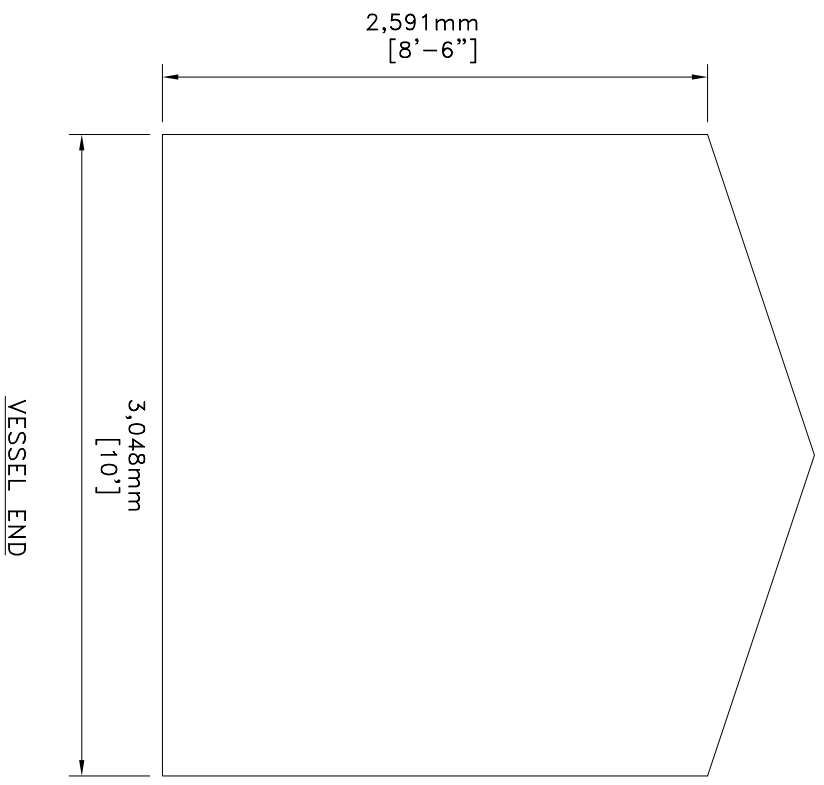
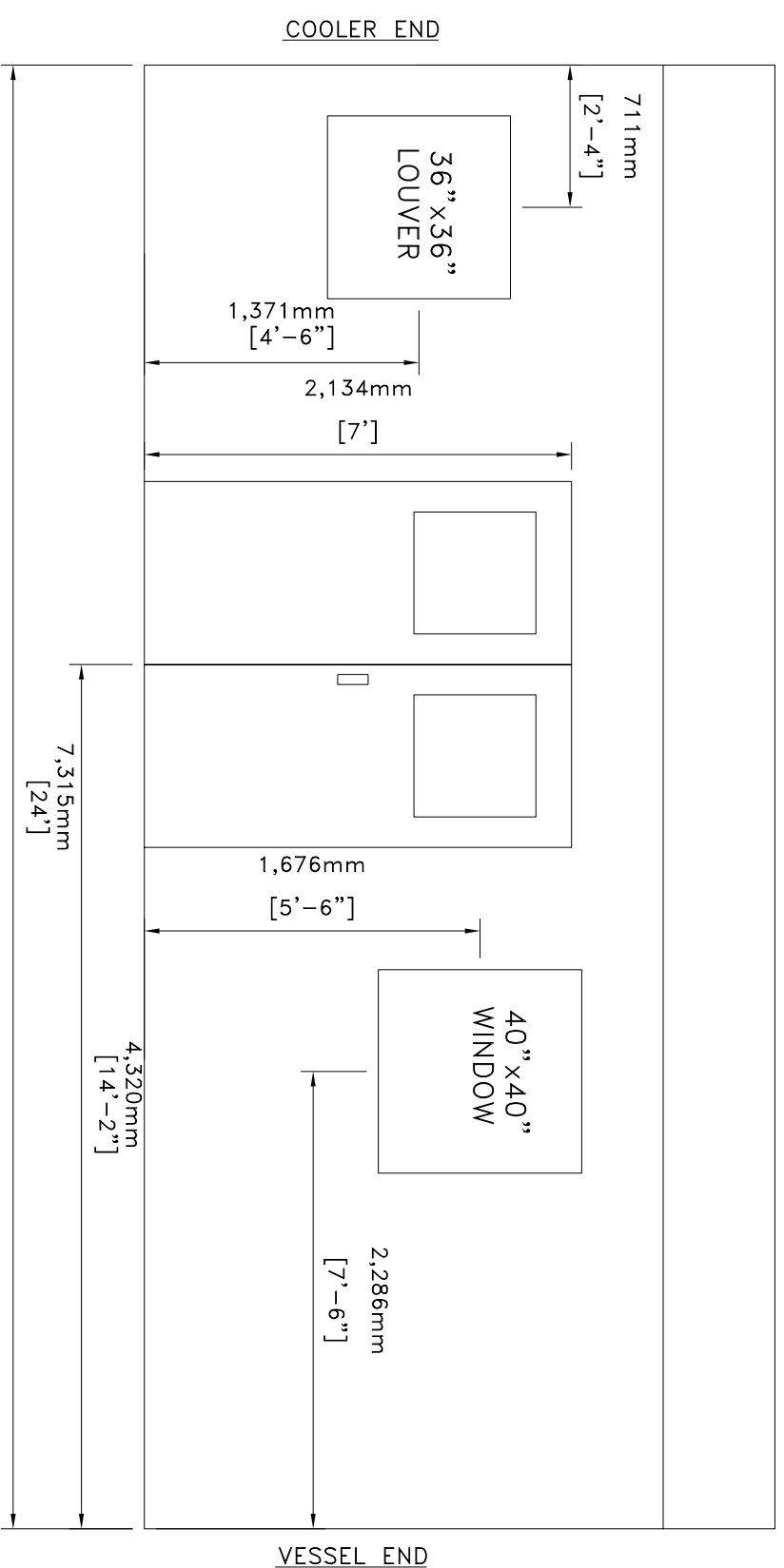
CUSTOMER CONNECTIONS

ITEM	DESCRIPTION	SIZE	ELEVATION	PROJ.
A	INLET	4"-300# RF	452mm FTOS	127mm
B	DISCHARGE	3"-300# RF	115mm FTOS	120mm
C	FLARE HEADER	3"-150# RF	2,350mm FTOS	152mm
D	MANUAL DRAIN	1"-NPT	110mm FTOS	105mm
E	AUX. FUEL GAS	1"-NPT	320mm FTOS	120mm

REV.	DESCRIPTION	DATE	BY	CHKD	APPD
1	AS BUILT	07-03-09	SLS		
0	ISSUED FOR CONSTRUCTION	07-01-29	SLS	CAD	ENG

9000 SERIES COMPRESSOR
G.D. SSP w/ 3306 ATAAC ENGINE
SKID MOUNTED, SOUR SERVICE

COMPANY: ENCANA
Drawn by: SLS
Checked by:
Approved by:
DATE: 07-01-29
SCALE: 1:30
JOB NO.: 90372
DRAWING NO.: CDL-90372-B-01
REV.: 1



- BUILDING INFO:**
- 10'-0" W x 24'-0" L x 8'-6" H
 - SELF FRAMER
 - R12 INSULATION
 - GALVALUM EXTERIOR
 - GALVALUM INTERIOR
 - TWO 6"x7" DOUBLE DOORS (PAINTED JIRO GREY), BIRD LOCKS TO BE KEYPED ALIKE TO JIRO KEY, c/w 24" x 24" WINDOWS AND PANIC HARDWARE
 - TWO 40" x 40" WINDOWS
 - TWO 36" x 36" BALANCED LOUVERS
 - ONE 47" x 97" OPENING FOR COOLER LOUVERS
 - ONE 16" x 16" ACCESS DOOR FOR HEATER ACCESS
 - ONE 17 1/4" x 17 1/4" OPENING FOR JUNCTION BOX

REV.	DESCRIPTION
1	ADD JUNCTION BOX OPENING FOR SC-1738-C1
0	ISSUED FOR CONSTRUCTION

BY	DATE	CHKD	APPD
WST	07-03-01	WST	SE
SLS	07-02-21	CHND	APPD

JIRO
ENERFLEX

5221-46th St. S, Settler, Alberta
Box 1450, T0C 2L2
Phone: 403.742.5538
Fax: 403.742.5539

COMPANY: ENCANA		JOB NO.: 90372	
Drawn by: SLS	Checked by: WST	Approved by: SE	DATE: 07-02-13
9000 SERIES COMPRESSOR		SCALE: 1:30	
G.D. SSP w/ 3306 AATAC ENGINE		DRAWING NO.: CDL-90372-F-01	
BUILDING LAYOUT		REV.: 0	